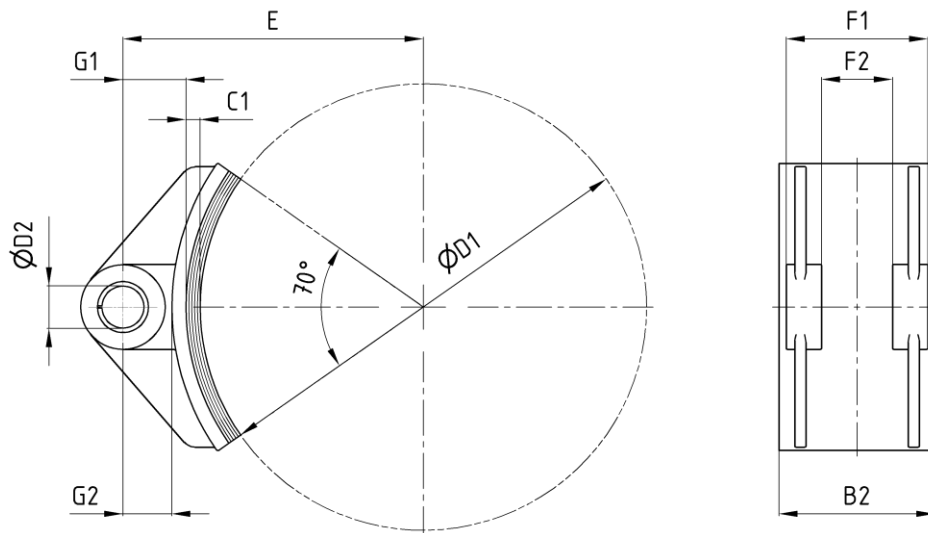


Brake Shoes

according to DIN 15435

edition 06/2022 | EN
page 1 / 1



Order example: brake shoe DIN 15435 - D1 - 131¹⁾ - type

dimension in [mm]

Data

D1	B2	C1	D2	E	F1 -0,2	F2 +0,2	G1	G2	weight ca. [kg] ²⁾	
									brake shoe	total
200	70	8	20	140	65	35	32	24	0,5	0,7
250	90	8	25	170	80	40	37	29	0,7	1,0
315	110	10	30	212	100	50	44,5	34,5	1,5	2,1
400	140	10	35	260	125	62	50	40	2,2	3,1
500	180	12	40	320	160	80	58	46	4,0	6,0
630	225	12	45	390	200	100	63	51	6,0	8,9
710	255	15	50	440	224	112	70	56	8,5	12,8

Type

- A1C: brake shoe made of cast aluminium with steel bushes, for glueing the brake pad (standard)
- A2C: brake shoe made of cast aluminium with steel bushes and rivet holes
- B1: brake shoe made of cast iron with steel bushes, for glueing the brake pad
- B2: brake shoe made of cast iron with steel bushes and rivet holes

1) standard brake pad brand COSID 131, other brake pad brands on request
2) weight specification for cast aluminium, correction factor cast iron: 2,2