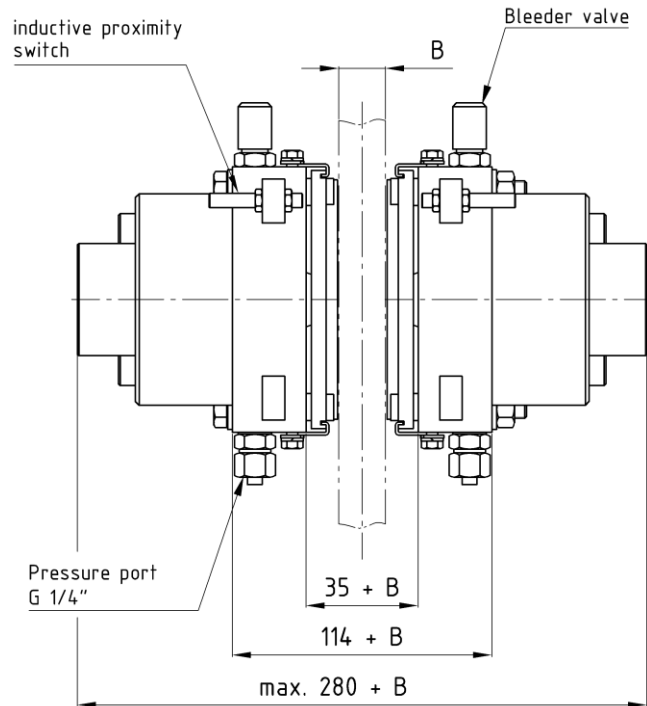
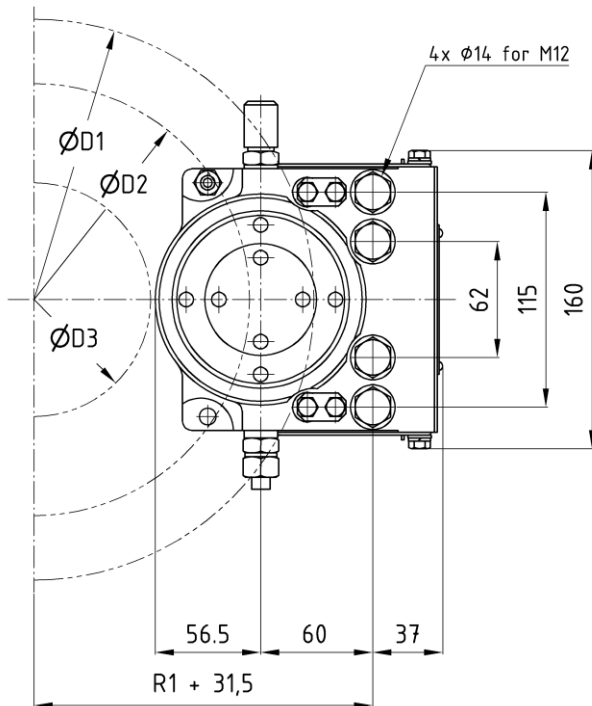


Disc brake SZRFH-2

dimensions and technical data

edition 12/2023 | EN
page 1 / 1



Order example: SZRFH-2 - D1 x B

dimensions in [mm]

Technical data

Braking torque [Nm]		
$M_{Br} = F_A * (D2 / 1000) * \mu$		
Friction coefficient $\mu = 0,4$		
Clamp force F_A [N] ¹⁾		
Air gap 1 mm	Pressure [bar]	M_A ²⁾ [Nm]
2400	5	10.9 - 120
9600	28	10.9 - 120
Brake disc		
Brake disc diameter D1	min. 300 mm	
Friction diameter D2	D1 - 69 mm	
Hub diameter D3	D1 - 175 mm	
Brake disc thickness B	min. 25 mm	

Operational data	
Release time ³⁾	1 - 2,5 s
Theoretical close time ⁴⁾	ca. 0,25 s
Pad surface	73 cm ²
Oil volume	0,086 l
Oil volume at working stroke	0,011 l
Hydraulic connection	G 1/4" / pipe Ø12 x 1,5
Operating temperature	-20°C bis +60°C
Screw size / strength	M12 - 10.9
Weight without mounting bracket	20 kg

- Available with mounting bracket and assembled hydraulic power unit, filled and bled as „plug and play“- version.
- Inductive proximity switch for monitoring brake open position as standard.
- optional: Inductive proximity switch for monitoring remaining brake pad thickness

1) The clamp force can vary between 5%.
 2) Screw tightening torque is specified for ungreased thread. The usage of screws and nuts without surface treatment is recommended.
 3) The brake release time depends strongly on the used hydraulic power unit.
 4) The theoretical close time can only be achieved with the correct size of the hydraulic pipe.