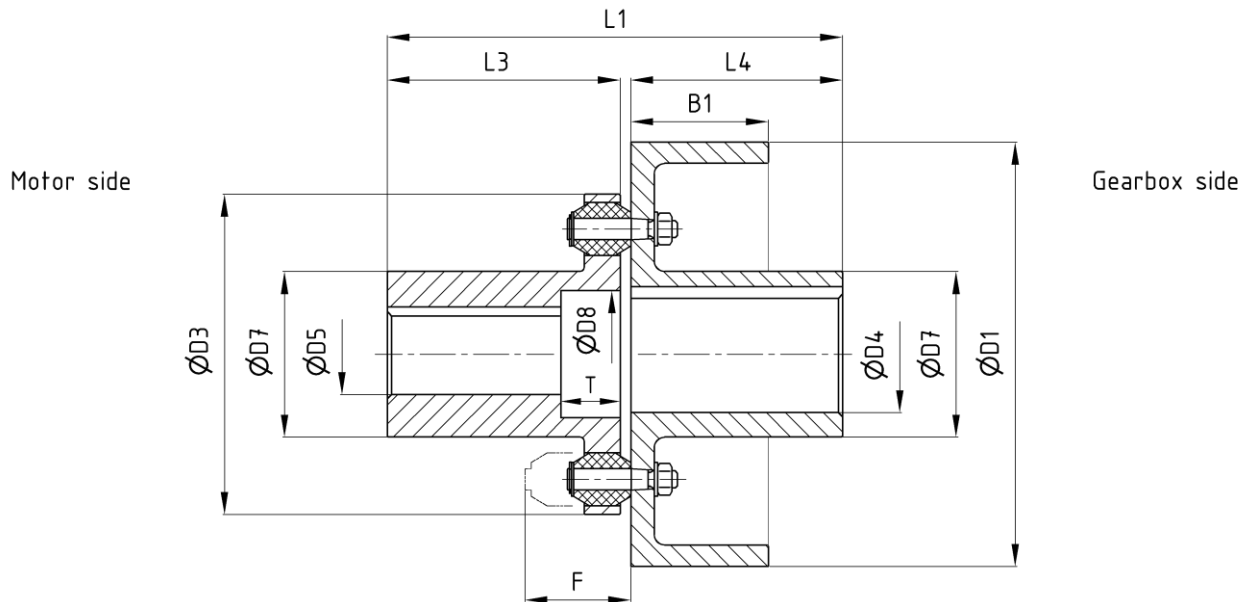


**Type D:**  
for horizontal assembly

## Flexible pin coupling

with brake drum according to TGL 38558

edition 06/2022 | EN  
page 1 / 1



Order example: EBK D NG - D1 - D4H7P1 - D5H7P1 - D8 x T - dy - TGL 38558

dimensions in [mm]

### Technical data

Nominal size NG	M <sub>B</sub> <sup>1)</sup> [Nm]		n <sub>max</sub> <sup>2)</sup> [1/min]	D1	B1	D3	D4 <sup>3)</sup>		D5 <sup>3)</sup>	D7	D8	T	L1	L3	L4	F	J <sub>rot</sub> [kgm <sup>2</sup> ]	m [kg]	M <sub>A</sub> [Nm]		
	T <sub>kN</sub>	T <sub>kmax</sub>					min	max												max	max
16	160	240	3000	160	50	123	18	45	32	65	50	22	163	80	80	57	0,016	6,6	5,1		
			3000	200	65		22	55	38	78	64	28	215	110	100	70	0,037	8,8			
			3000	250	80										163	80	80			0,086	12
40	400	600	3000	200	65	151	22	55	38	78	64	28	215	110	100	70	0,049	14	16		
			3000	250	80										215	110	100			0,104	18
			3000	320	100										215	110	100			0,298	27
100	1000	1500	3000	250	80	198	28	75	60	108	92	35	255	140	110	92	0,15	26	43		
			3000	320	100										255	140	110			0,35	35
			2400	400	125										285	140	140			0,99	50
250	2500	3750	3000	320	100	250	42	95	80	145	119	40	315	170	140	107	0,52	47	43		
			2400	400	125										315	170	140			1,22	69
			1900	500	160										345	170	170			3,52	103
630	6300	9.500	1900	500	160	320	90	120	90	165	146	45	388	210	170	130	3,64	124	106		
			1500	630	200										428	210	210			9,44	178
1000	10000	15000	1350	710	225	380	90	130	100	175	159	45	443	210	225	150	16,69	233	370		
1600	16000	24000	1350	710	225	440	90	160	110	210	178	45	445	210	225	165	17,40	267	370		

- 1) torsion angle at T<sub>kN</sub> φ = 3° ± 1°
- 2) Use at higher speeds on request
- 3) Finish boring according to DIN EN ISO 286-1 H7, keyway according to DIN 6885-1 JS9, balancing quality G 6,3 according to DIN ISO 1940-1  
Other diameters and fits on request
- 4) Standard: Buffer made from PUR 85 Shore A, nature, operating temperatur from -40° C up to +80° C / other materials on request