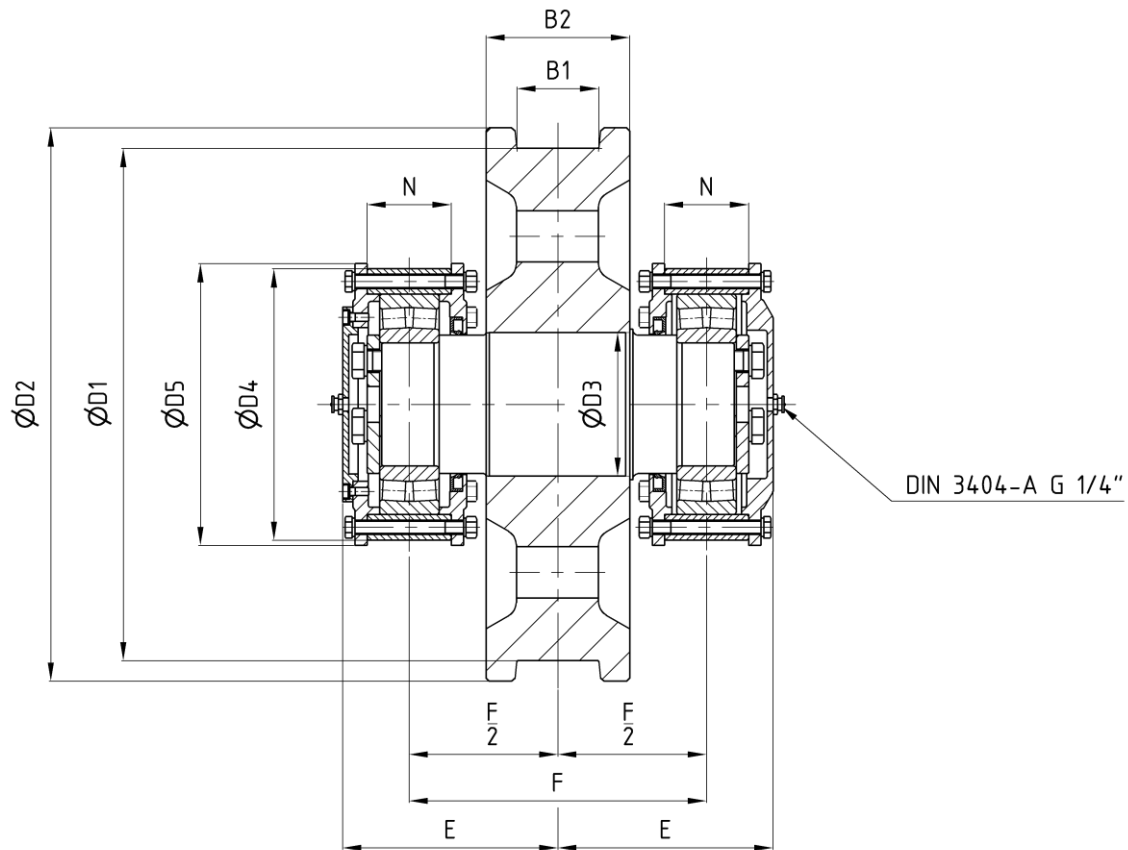


Spherical roller bearing  
model series 222

## Non-driven wheel according to DIN 15090

edition 06/2022 | EN  
page 1 / 4



Order example: Non-driven wheel DIN 15090 - BHKE - 222 - D1 x B1

dimensions in [mm]

### Technical data

D1	B1		D2	D3	D4	D5	B2	E	F	N	Bearing DIN 635	m [kg]
	min	max										
315	55	65	350	120	230	240	110	173	235	62	222 20	125
400	65	90	440	130	250	260	140	202	280	72	222 22	195
500	65	90	540	140	265	275	140	210	290	82	222 24	270
630	75	110	680	180	330	345	160	245	335	94	222 30	480
710	95	160	760	190	350	365	210	278	395	104	222 32	705
800	95	160	850	200	370	385	210	289	405	114	222 34	865

Design	
B	wide wheel
H	with wheel flange
G	without wheel flange
K	without wheel rim
E	without oilpress fit
D	with oilpress fit

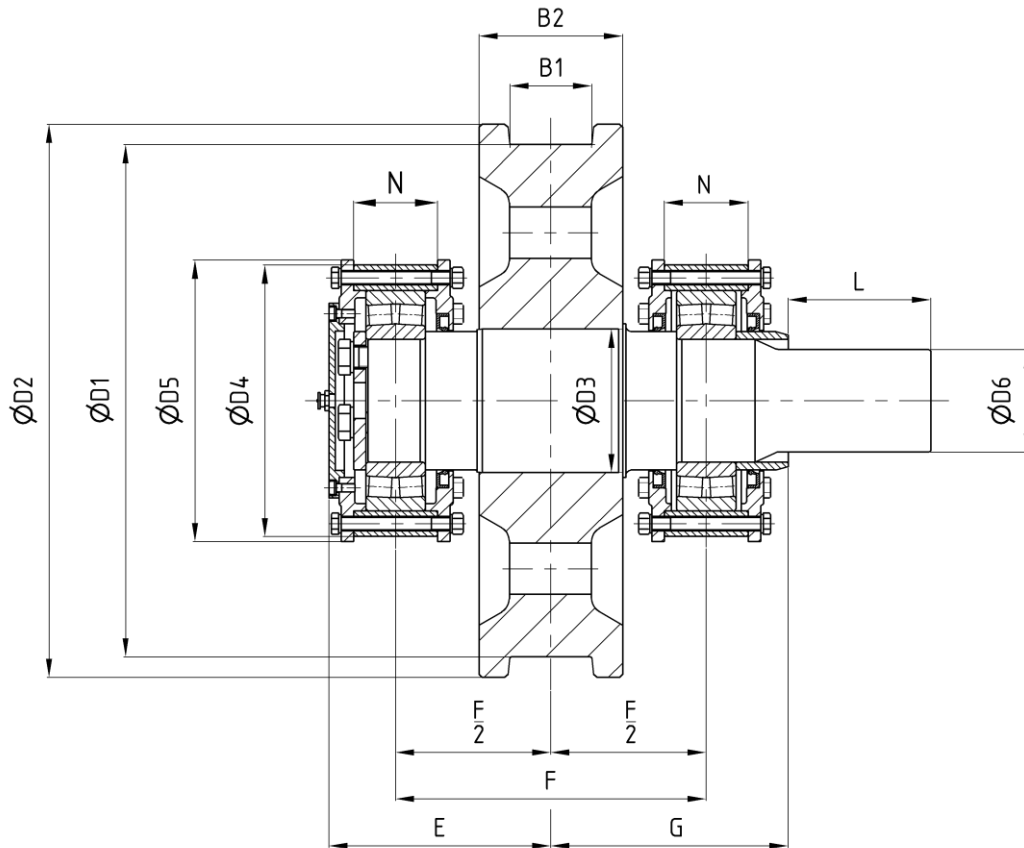
- Shaft and wheel made from 42CrMo4 + QT
- maximum tensile strength: 950 - 1050 N/mm<sup>2</sup> (280 HV / 29 HRC)
- optional: Surface hardening of the running surface and the flange (530 HV / 51 HRC)
- Lubricant recommendation:  
Lithium / Calcium-soap grease with specification K2K-30 according to DIN 51825

subject to change without notice

Spherical roller bearing  
 model series 222

## Driven wheel

  
 according to DIN 15090

 edition 06/2022 | EN  
 page 2 / 4


Order example: Driven wheel DIN 15090 - BHKE - 222 - D1 x B1 - R1 or R2

dimensions in [mm]

### Technical data

D1	B1		D6		L		D2	D3	D4	D5	B2	E	G	F	N	Bearing DIN 635	m [kg]
	min	max	R1	R2	R1	R2											
315	55	65	70	80	105	120	350	120	230	240	110	173	190	235	62	222 20	130
400	65	90	80	90	120	132	440	130	250	260	140	202	215	280	72	222 22	205
500	65	90	80	100	120	152	540	140	265	275	140	210	225	290	82	222 24	280
630	75	110	100	110	152	152	680	180	330	345	160	245	265	335	94	222 30	500
710	95	160	110	130	152	172	760	190	350	365	210	278	300	395	104	222 32	730
800	95	160	130	140	172	202	850	200	370	385	210	289	310	405	114	222 34	900

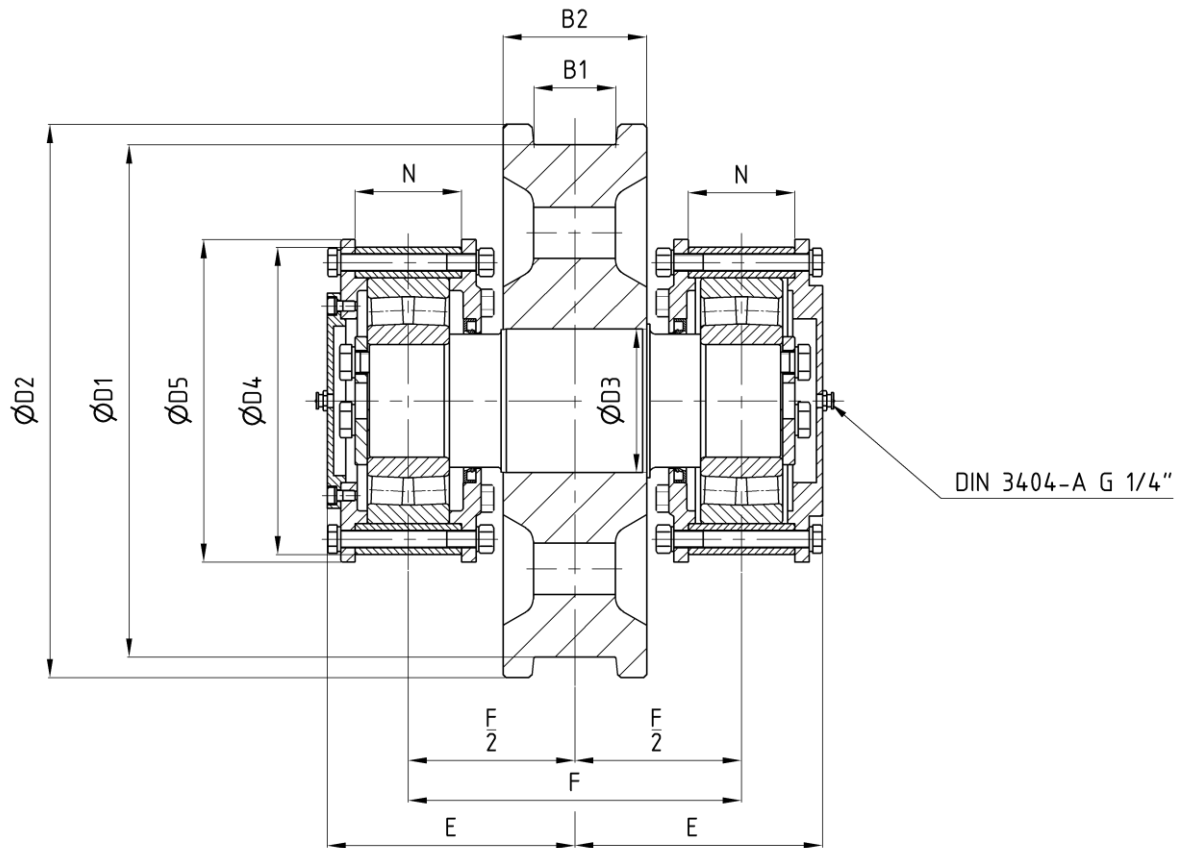
Design	
B	wide wheel
H	with wheel flange
G	without wheel flange
K	without wheel rim
E	without oilpress fit
D	with oilpress fit

- drive shaft connection for all motor manufacturer on request
- further specification equal to non-driven wheel

Spherical roller bearing  
model series 223

## Non-driven wheel according to DIN 15090

edition 06/2022 | EN  
page 3 / 4



Order example: Non-driven wheel DIN 15090 - BHKE - 223 - D1 x B1

dimensions in [mm]

### Technical data

D1	B1		D2	D3	D4	D5	B2	E	F	N	Bearing DIN 635	m [kg]
	min	max										
315	55	65	350	120	240	250	110	191	255	82	223 18	140
400	65	90	440	130	265	275	140	216	295	92	223 20	220
500	65	90	540	140	300	315	140	242	325	104	223 22	320
630	75	110	680	180	340	355	160	265	355	114	223 26	515
710	95	160	760	190	360	375	210	300	415	124	223 28	720
800	95	160	850	200	380	395	210	308	425	132	223 30	895

Design	
B	wide wheel
H	with wheel flange
G	without wheel flange
K	without wheel rim
E	without oilpress fit
D	with oilpress fit

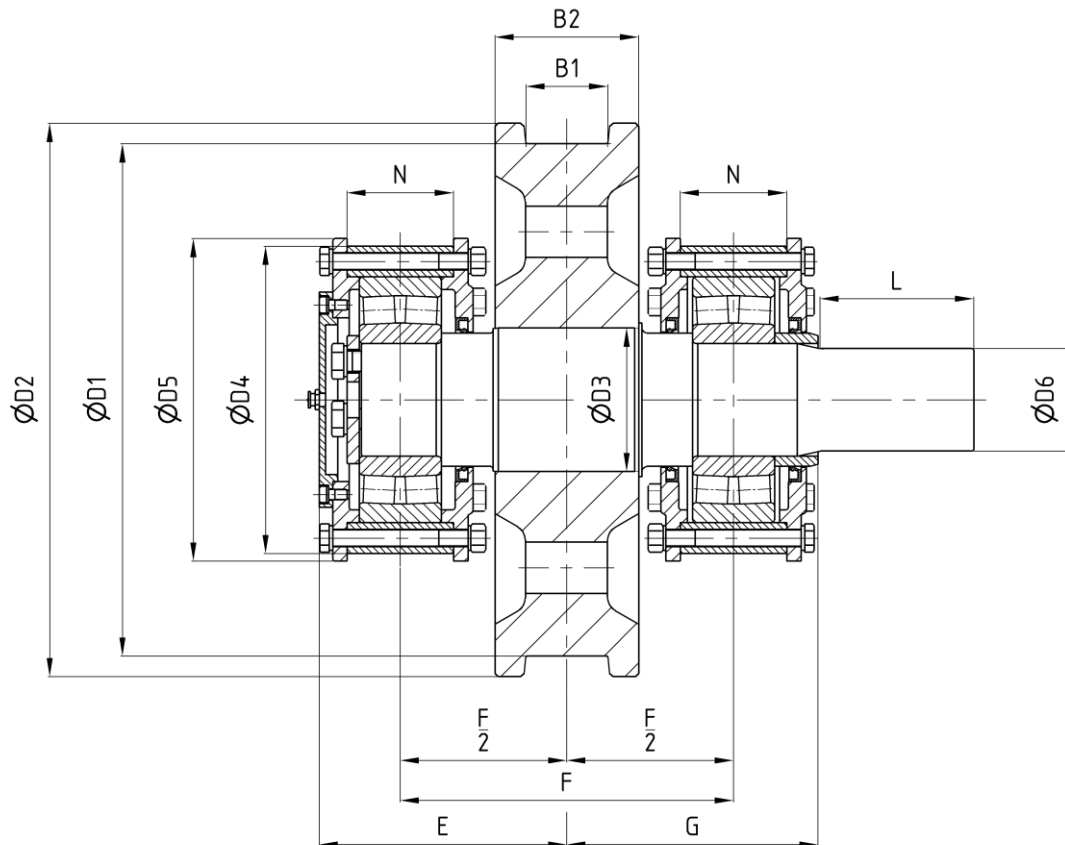
- Shaft and wheel made from 42CrMo4 + QT
- maximum tensile strength: 950 - 1050 N/mm<sup>2</sup> (280 HV / 29 HRC)
- optional: Surface hardening of the running surface and the flange (530 HV / 51 HRC)
- Lubricant recommendation: Lithium / Calcium-soap grease with specification K2K-30 according to DIN 51825

subject to change without notice

Spherical roller bearing  
model series 223

## Driven wheel according to DIN 15090

edition 06/2022 | EN  
page 4 / 4



Order example: Driven wheel DIN 15090 - BHKE - 223 - D1 x B1 - R1 or R2

dimensions in [mm]

### Technical data

D1	B1		D6		L		D2	D3	D4	D5	B2	E	G	F	N	Bearing DIN 635	m [kg]
	min	max	R1	R2	R1	R2											
315	55	65	70	80	105	120	350	120	240	250	110	191	190	255	82	223 18	145
400	65	90	80	90	120	132	440	130	265	275	140	216	215	295	92	223 20	230
500	65	90	80	100	120	152	540	140	300	315	140	242	245	325	104	223 22	320
630	75	110	100	110	152	152	680	180	340	355	160	265	265	355	114	223 26	525
710	95	160	110	130	152	172	760	190	360	375	210	300	300	415	124	223 28	745
800	95	160	130	140	172	202	850	200	380	395	210	308	310	425	132	223 30	925

Design	
B	wide wheel
H	with wheel flange
G	without wheel flange
K	without wheel rim
E	without oilpress fit
D	with oilpress fit

- drive shaft connection for all motor manufacturer on request
- further specification equal to non-driven wheel

subject to change without notice